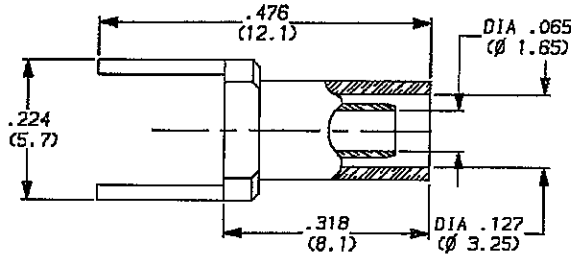
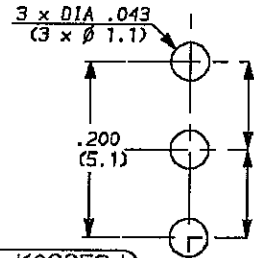


**FEEDTHROUGH FOR P.C.B CRIMPING TYPE  
CABLE 2,6/50 DTR**



**MOUNTING HOLE**



(---) DIMENSIONS IN MM

WEIGHT 0 oz (..... g)

Cable : 96 CEI 50-2-2DB , K02252d

**CHARACTERISTICS**

NOMINAL IMPEDANCE	50 Ω	STANDARDISATION	-
FREQUENCY RANGE	0-3 GHz		-
TEMPERATURE RATING	-55 α +155 °C		-
VSWR	NA Max		-
RF INSERTION LOSS	NA dB Max	CABLE RETENTION	24.075 Lb Max 107 N Max
VOLTAGE RATING	900 Vrms	CENTER CONTACT RETENTION	
DIELECTRIC WITHSTANDING VOLTAGE	NA Vrms	Axial force - mating end	0 Lb Max NA N Max
INSULATION RESISTANCE	NA MΩ	Axial force - opposite end	0 Lb Max NA N Max
HERMETIC SEAL	NA cc/s cm <sup>3</sup> /s	Torque (Max)	0 inch.oz NA cm.N
LEAKAGE (pressurized only)	0 psi kg/cm <sup>2</sup>	MATING TORQUE RECOMMENDED	0 inch.Lb NA cm.N
-	-	-	-
-	-	-	-

**CONSTRUCTION**

CONNECTOR PARTS	MATERIALS	FINISH
Body	Brass	Tin
Outer contact	-	-
Center contact	-	-
Insulators	-	-
Ferrule	Brass	Nickel
-	-	-
-	-	-
-	-	-
-	-	-

ISSUE	REVISION No	DESCRIPTION	BY	DATE

Initiated on 03 11 88

The information given here is subject to change without notice. Design changes may be in order to improve the product.



Superseded on --- -- --

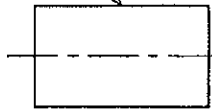
Panel cable receptacle, crimp-type  
- cable 2,6/50 DTR

SERIES:

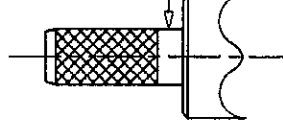
MCX

02/02

FERRULE

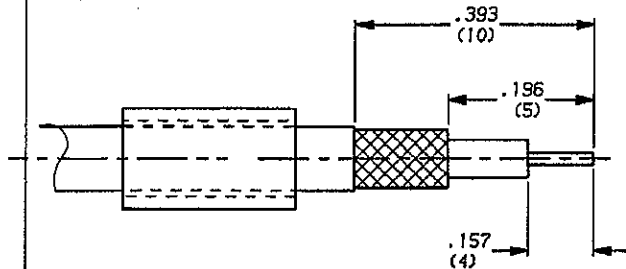


BODY



1-1 To slide ferrule on the cable

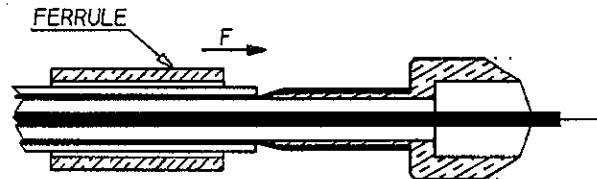
1-2 Cable stripping



2-1 To open the braid

2-2 To slide body under braid

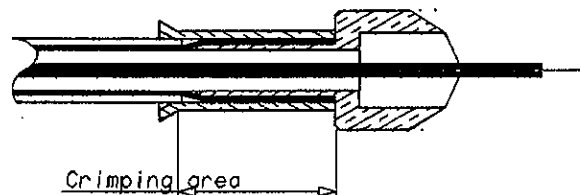
2-3 To slide the ferrule on braid according to F direction



3-3 To crimp the ferrule

crimping tool R 282 271

Hex : .127 (3.25)



ISSUE	REVISION No	DESCRIPTION	BY	DATE

Initiated on 29 08 88

The information given here is subject to change without notice. Design changes may be in order to improve the product.



Superseded on \_\_\_\_\_